

2011 PROFILE FOR COLLEGES

OVERVIEW

Founded in 1889, Ridley is one of Canada's most respected independent schools. The college's beautiful 100-acre campus is located 30 kilometres from Niagara Falls in St. Catharines, Ontario, and contains outstanding facilities for academics, athletics, information technology and the arts. Co-educational since 1973, Ridley enjoys student representation from over 31 countries, and stresses a structured, multi-faceted educational environment: athletics, extra-curricular activities, morning chapel, community service, and cadet corps. Ridley's graduates attend universities and colleges in Canada, the United States, and around the globe. Known for the strong sense of community, which unites its students, faculty, and alumni, Ridley attracts highly-qualified applicants and offers one of the top financial assistance programs of all Canadian schools. In September 2010, 38% of the student body was awarded \$3 million in need-based bursaries and merit-based scholarships.



RIDLEY COLLEGE

2 Ridley Road
St. Catharines, ON
Canada L2R 7C3
905.684.1889
Fax: 905.684.8875
www.ridleycollege.com
CEEB Code: 826597

STUDENT BODY

583 Total Students
408 Upper School (9-12/PG)
175 Lower School (JK-8)
31% International Students

UPPER SCHOOL

Boarding/Day Student Ratio: 2:1
Faculty/Student Ratio: 1:8.5
Average Class Size: 17

ACCREDITATIONS

• Ontario Ministry of Education • Standards in Education and Learning (Canadian independent school self-accreditation association) • National Association of Independent Schools (NAIS).

ACADEMICS

Ridley offers the university preparatory academic stream of the Ontario Ministry of Education curriculum (<http://www.edu.gov.on.ca/eng/teachers/curriculum.html>), and 18 Advanced Placement subjects.

Operating on a traditional tri-mester structure, Ridley's year is divided into the following terms: Michaelmas (September to December), Lent (January to March), and Trinity (April to June). Examinations are scheduled in most subjects in December and June, and progress reports are prepared on a tri-weekly basis. Courses are taught on a four-day cycle with four 75-minute periods daily. As a laptop school, all aspects of school life and academics primarily are operated through a comprehensive internet based website.

As the Niagara Region test centre for both the SAT and ACT, Ridley offers testing throughout the school year.

Ridley complies with ethical practices policy of the National Association of College and Admissions Counselors (NACAC).

Jonathan Leigh, MA
Headmaster

Stephen Clarke, MSc, BEd
Deputy Headmaster
stephen_clarke@ridleycollege.com

Jennifer MacLachlan, BA, MEd
Director of Guidance
jennifer_macLachlan@ridleycollege.com

Alison Champ, BA, MEd
Guidance Counsellor
alison_champ@ridleycollege.com

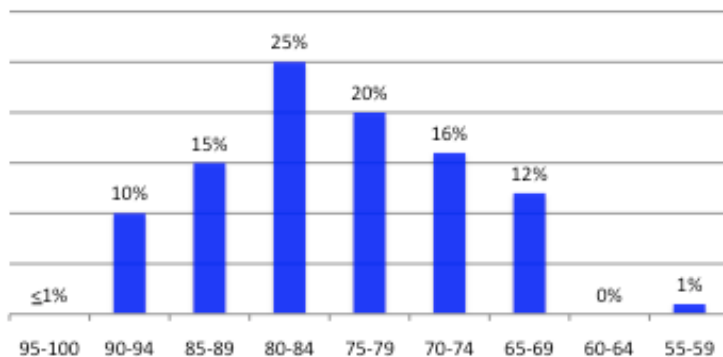
Simon Hall, BA, MEd
Guidance Counsellor
simon_hall@ridleycollege.com

Trish Loat, BA, BEd
Guidance Counsellor
trish_loat@ridleycollege.com

David Whitty, BA, BEd
Guidance Counsellor
david_whitty@ridleycollege.com

Kay Johnson
Registrar
kay_johnson@ridleycollege.com

CLASS OF 2010 MARK DISTRIBUTION



AVERAGE

90-100
80-89
70-79
60-69
50-59
Below 50%

LETTER GRADE EQUIVALENCE

A+
A
B
C
D
F

UNIVERSITIES AND COLLEGES 2007-2010

CLASS OF 2010 DESTINATIONS

Ontario Colleges and Universities	46%
Canadian Universities Outside Ontario	13%
U.S. Colleges and Universities	16%
Universities Outside North America	14%
Gap Year	11%
Total	100%

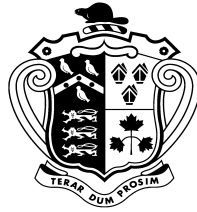
ADVANCED PLACEMENT

A synopsis of exams written by Ridley students during the last four years :

AP EXAM	2010	2009	2008	2007
Art History	15	3		
Biology	27	17	38	18
Calculus AB	6	13	16	5
Chemistry	10	6	11	4
Economics – Macro	31	15		
Economics – Micro	31	14	4	5
English Language	33	20	27	17
English Literature	32	20	28	17
French Language	13	10	6	11
German Language	2	1	1	
History – European	2	2	1	2
Human Geography		6		
Japanese Language	1			
Physics C: Mechanics	9	10	22	11
Spanish Language	1	3	5	4
Studio Art – Drawing	8	9	13	9
Studio Art – 2D Design	4	3		
World History		1		
TOTALS	225	153	172	103



- ONTARIO**
- Brock University
 - Carleton University
 - Conestoga College
 - Fanshawe College
 - Humber College
 - Laurentian University
 - McMaster University
 - Mohawk College
 - Niagara College
 - Ontario College of Art & Design
 - Queen's University
 - Royal Military College
 - Ryerson University
 - Seneca College
 - Sheridan College
 - Trent University
 - University of Guelph
 - University of Ottawa
 - University of Toronto
 - University of Waterloo
 - University of Western Ontario
 - Huron University College
 - King's University College
 - University of Windsor
 - Wilfrid Laurier University
 - York University
- CANADA EAST**
- Concordia University
 - Dalhousie University
 - King's College, Halifax
 - McGill University
 - Mount Allison University, NB
 - Nova Scotia College of Art & Design
 - St. Mary's University
 - University of Moncton, NB
 - University of Prince Edward Island
- CANADA WEST**
- Emily Carr Institute of Art & Design
 - Quest University
 - Trinity Western University, BC
 - University of Alberta
 - University of British Columbia, Okanagan
 - University of British Columbia, Vancouver
- U.S.A.**
- Academy of Art University, CA
 - Art Centre College of Design
 - Babson College
 - Boston College
 - Boston University
 - Bryant College
 - Barry University, Florida
 - Colgate University
 - Cornell University
 - DePaul University, Chicago
 - Drexel University, Philadelphia
 - Florida International University
 - Florida Institute of Technology
 - High Point University
 - Indiana University Bloomington
 - Lynn University
 - Maryland Institute College of Art
 - Michigan State University
 - Middlebury College, Vermont
 - New York University (NYU)
 - Northeastern University
 - North Park University, Chicago
 - Ohio State University
 - Ohio Wesleyan University
 - Parsons
 - Pasadena City College
 - Purdue University
 - Rhodes College, Tennessee
 - Roanoke College, Virginia
 - Robert Morris University, Pittsburgh
 - Rollins College
 - San Francisco State
 - Santa Fe College, Florida
 - Salve Regina University
 - School of Art Institute in Chicago
 - Spelman College, Georgia
 - St. Lawrence University
 - St. Louis University, Missouri
 - State University of New York at Albany
 - Stetson University
 - Syracuse University
 - Tulane University
 - University of California, Berkeley
 - University of Illinois at Urbana Champaign
 - University of Maine at Augusta
 - University of Massachusetts-Boston
 - University of Miami
 - University of Michigan at Ann Arbor
 - University of Pennsylvania
 - University of Tampa
 - University of Texas at Austin
 - University of Vermont
 - University of Virginia
 - University of Washington, Seattle
 - University of Wisconsin-Madison
- OUTSIDE OF CANADA & U.S.A.**
- Bangkok University
 - Beijing Language and Culture University
 - Bond University, Australia
 - Central Saint Martins College of Art & Design
 - Durham University, England
 - Erasmus University, Rotterdam
 - Esade, Barcelona
 - Estudios Superiores Internacionales, Spain
 - European School of Economics, Italy
 - Goldsmith's College, London
 - Hainbold University, Berlin
 - Imperial College London
 - Jagiellonian University, Poland
 - Jr. Master Highfield School, England
 - Keio University, Japan
 - King's College London, England
 - Kingston University, London, England
 - Manchester University, England
 - Medical School, Germany
 - Neuchatel Jr. College, Switzerland
 - Oxford Brookes University
 - Royal Holloway University, London
 - Schiller International University, Madrid
 - Trinity College, Dublin, Ireland
 - Universidad Iberoamericana, Mexico
 - Universidad Metropolitana, Venezuela
 - Universidad Politecnica de Madrid
 - University of Aachen, Germany
 - University of Edinburgh, Scotland
 - University of Glasgow, Scotland
 - University of Hong Kong
 - University of Manchester, England
 - University of St. Andrews, Scotland
 - University of Southampton, England
 - University of the Arts, London
 - Vienna Medical School



Ridley College

EQUIVALENCY CHART

Ridley percent		Letter Grade		U.S GPA*		U.S. percent
≥ 90	=	A +	=	4.00	=	≥ 97
85 - 89	=	A	=	4.00	=	93 - 96
80 - 84	=	A -	=	3.67	=	90 - 92
77 - 79	=	B +	=	3.33	=	87 - 89
74 - 76	=	B	=	3.00	=	83 - 86
70 - 73	=	B -	=	2.67	=	80 - 82
67 - 69	=	C +	=	2.33	=	77 - 79
64 - 66	=	C	=	2.00	=	73 - 76
60 - 63	=	C -	=	1.67	=	70 - 72
57 - 59	=	D +	=	1.33	=	68 - 69
54 - 56	=	D	=	1.00	=	66 - 67
50 - 53	=	D -	=	0.67	=	65
≤ 49	=	F	=	0.00	=	≤ 64

* GPA - Grade Point Average